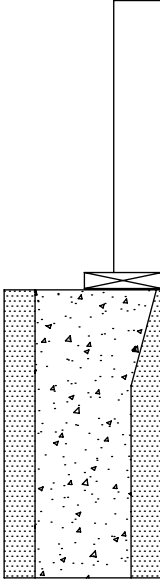
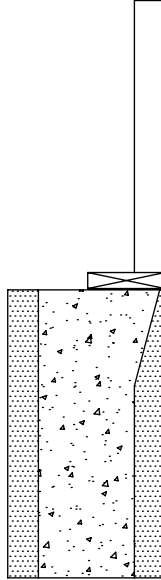


**Taper top panels are used where additional load bearing surfaces are needed - some examples are shown here**

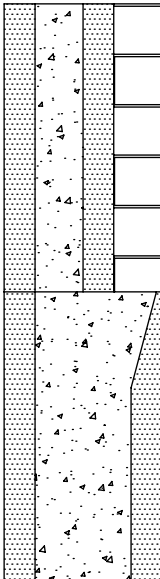
2" X 4" Garage Walls



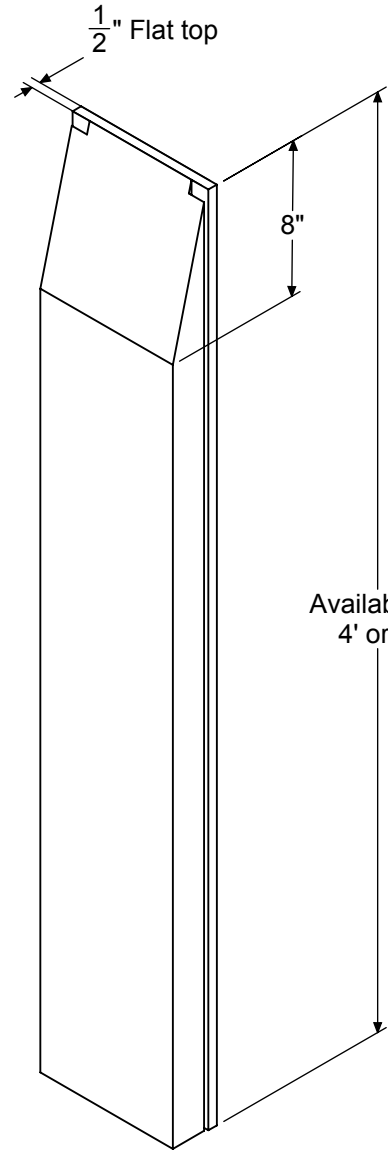
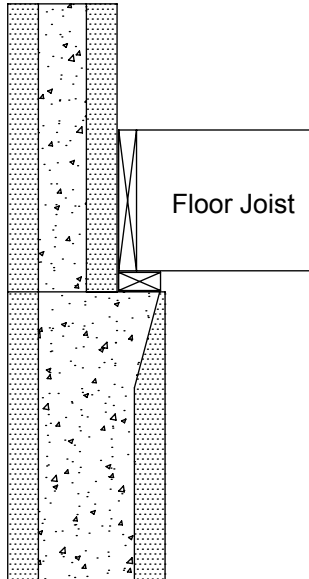
Gable End Truss Bearing



Brick Ledges



Floor Joist Ledges



Available in  
4' or 5'



Taper Top Panels

ThermoForm

TF Forming Systems, Inc.  
800-360-4634  
www.TFSystem.com

Date: 4/16/2014