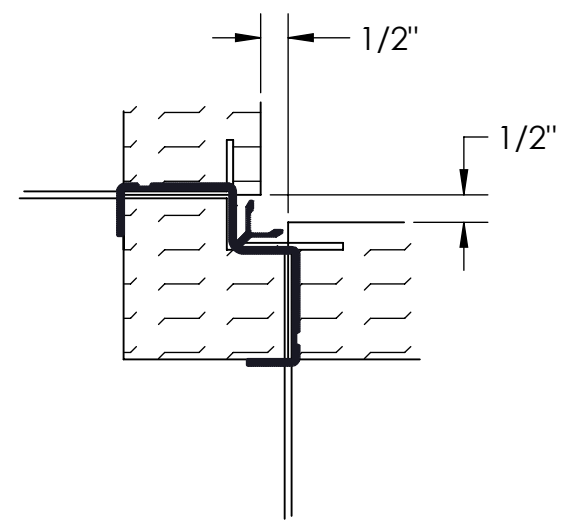
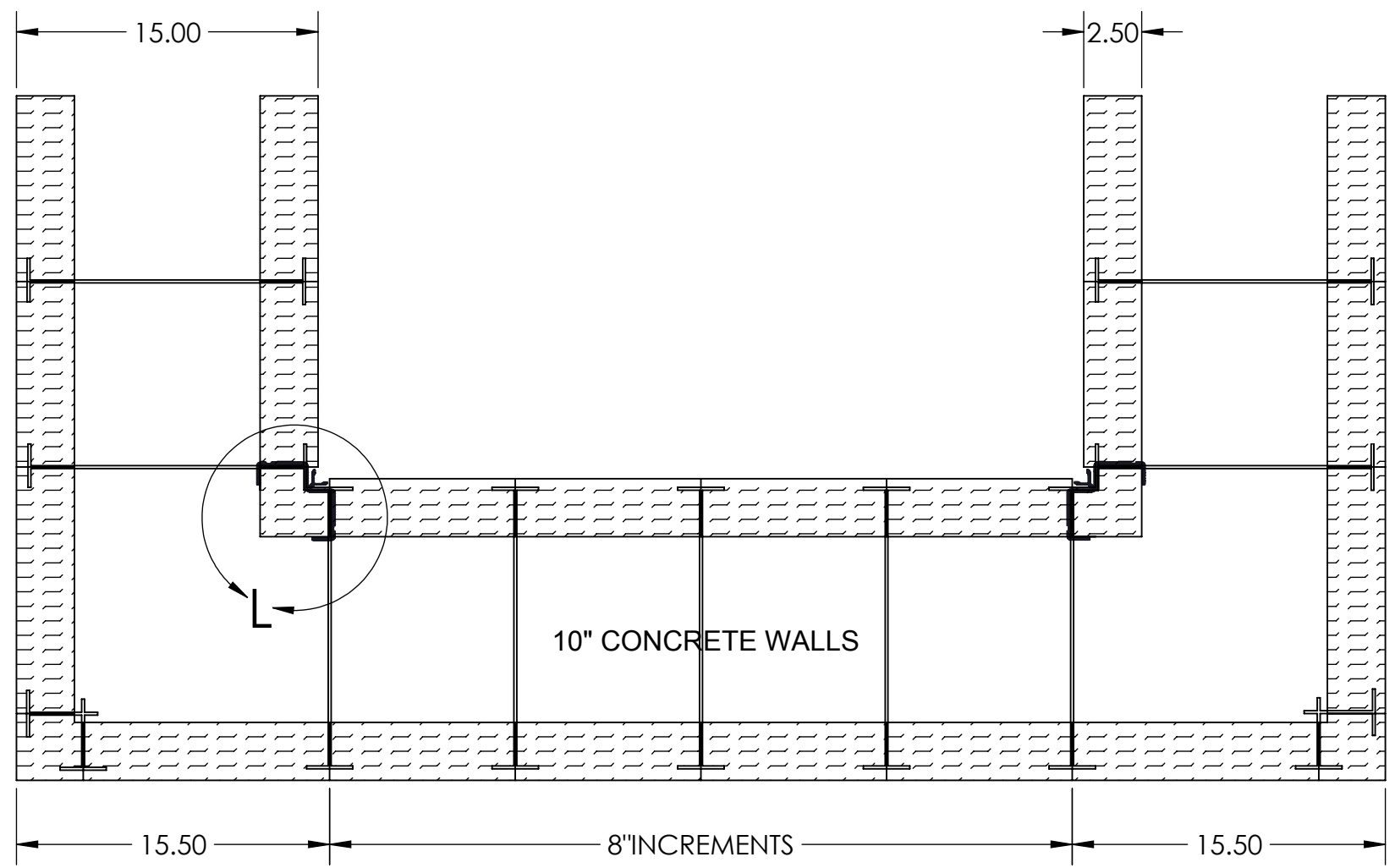


TF SYSTEM WALL FROM OUTSIDE CORNER  
OF POLY TO OUTSIDE CORNER OF POLY




DETAIL L  
SCALE 2 : 7

**NOTE:**

- POLY PANELS ARE 8" WIDE
- EXTERIOR CORNER DIMENSION IS 15.50"
- INTERIOR CORNER TAKES .50"

**CONFIDENTIAL**  
THE INFORMATION ON THIS DRAWING IS STRICTLY CONFIDENTIAL AND IS NOT TO BE DISCLOSED, COPIED, OR DISTRIBUTED.

	MATERIAL: EXPANDED POLYSTYRENE 1.5 LB/CUBIC FT NOMINAL		THERMOFORM SYSTEM	
	UNLESS OTHERWISE SPECIFIED:		TITLE: OPTIMAL DIMENSIONAL LAYOUT FOR 10" THICK CONCRETE WALL OUT TO OUT CORNER	
EPS blocks are to be stabilized at ambient temperature for a minimum of 72 hours before the cutting/fabrication process. Optional forced curing for 24 hours at 140 degrees Fahrenheit prior to the cutting/fabrication process is an acceptable alternative.		DIMENSIONS ARE IN INCHES		SIZE <b>B</b>
DATE:	01-09-2015	DWG. NO.	N/A	REV <b>1</b>
DRAWN BY:	LME	SCALE: 1:7		SHEET 1 OF 1