

Section 1

Preparing for ThermoForm System

Tools for the Jobsite

- 2 cordless circular saws
 - 1 saw for ripping poly panels
 - 1 saw set up for grooving poly panels
 - This saw should have 2 blades mounted together to make the proper width groove
 - A table saw can be used in place of a cordless circular saw
- 4' levels
- Rebar cutter or 4" grinder or metal cut off saw
- Scaffolding
 - Although not necessary, ICF scaffolding greatly facilitates construction by replacing kicker bracing and increasing jobsite safety
- Power fastener (for attaching C-channels to footing)
- Square
- Chalk line
- String line (for straightening walls)
- Hand saw
- 6' or 8' ladders

Tools Each Worker Should Have

- Tool pouch
- Hammer
- Aviator snips (for cutting stud rails and C-channels)
- Cordless screw gun

Fasteners

- 3" coarse thread construction screws (star drive / 6 lobe drive works best)
- 1-1/2" coarse thread construction screws (star drive / 6 lobe drive works best)
- 1/2" steel stud framing screws (darts) or sheet metal studs
- 1-1/4" round masonry nails, or power fasteners

Bracing Materials

- 2"X6" 's for corner bracing
- 2"X4" 's for corner bracing and kickers
- Stakes or pins for anchoring kickers

This list may not be complete; it is intended to show the basic tools required to efficiently install ThermoForm system components.



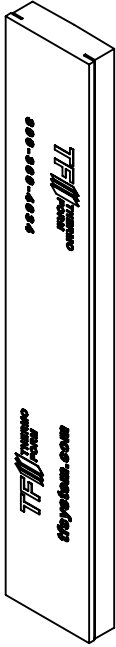
Tool List

ThermoForm

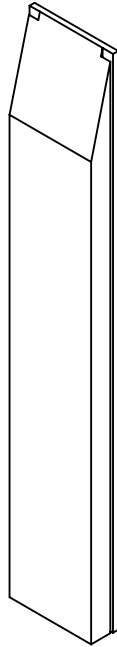
TF Forming Systems, Inc
800-360-4634
www.TFSystem.com

Date: 3/12/2014

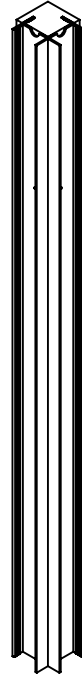
What components make up the ThermoForm System?



8" WIDE X 4' or 5'
2-1/2" THICK
MOLDED POLY PANEL



8" WIDE X 4' OR 5'
TAPER TOP
POLY PANEL

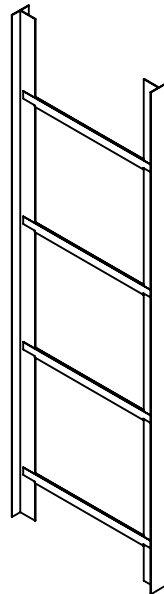


OUTSIDE PLASTIC
CORNER
90° & 45° AVAILABLE

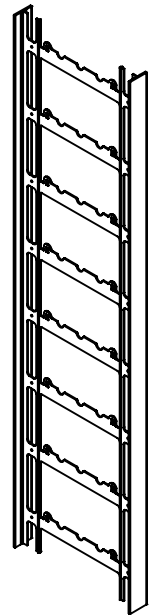


INSIDE PLASTIC
CORNER
90° & 45° AVAILABLE

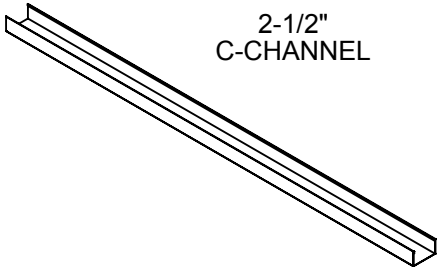
STEEL STUD
12"-24" CONCRETE
UP TO 12FT HEIGHTS



PLASTIC STUD
4"-10" CONCRETE
UP TO 12FT HEIGHTS



2-1/2"
C-CHANNEL



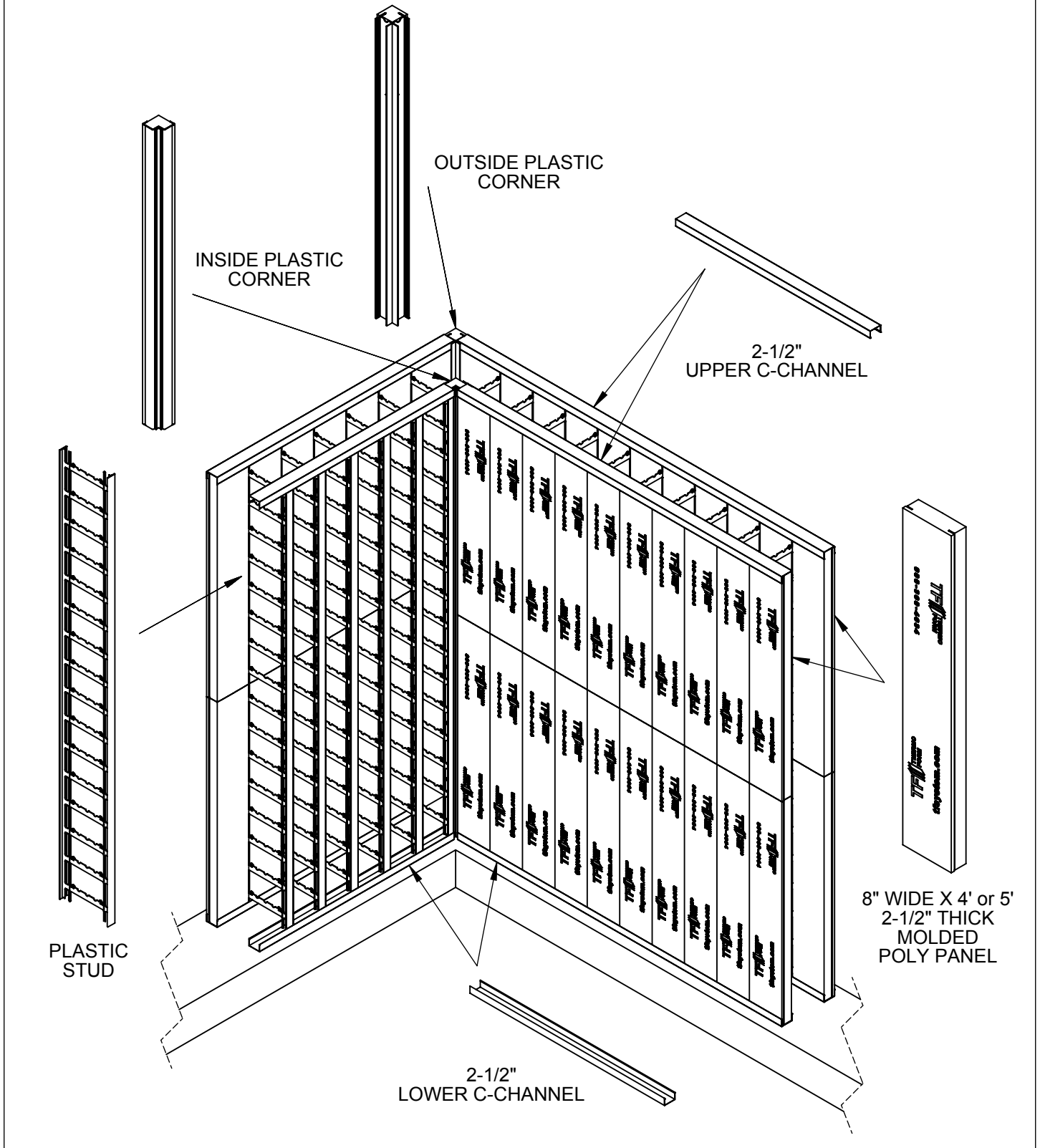
Basic Components

ThermoForm

TF Forming Systems, Inc.
800-360-4634
www.TFSystem.com

Date: 3/12/2014

Where are the components located in the ThermoForm System?



Locating Components

ThermoForm

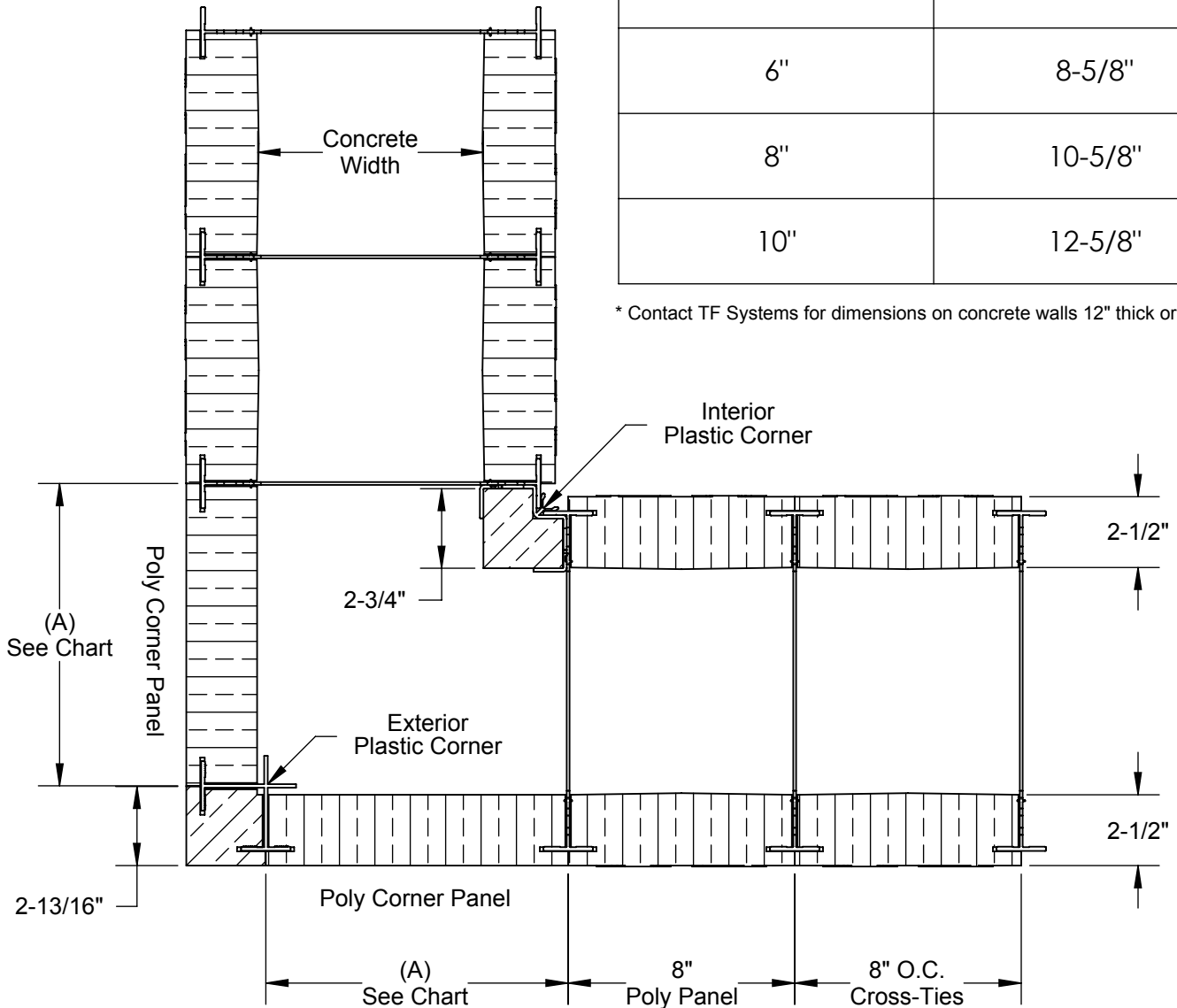
TF Forming Systems, Inc.
800-360-4634
www.TFSystem.com

Date: 3/11/2014

Corner Set Dimensions

Concrete Width	(A) Width of Poly Corner Panel
4"	6-5/8"
6"	8-5/8"
8"	10-5/8"
10"	12-5/8"

* Contact TF Systems for dimensions on concrete walls 12" thick or greater



90° Corner Sets

ThermoForm

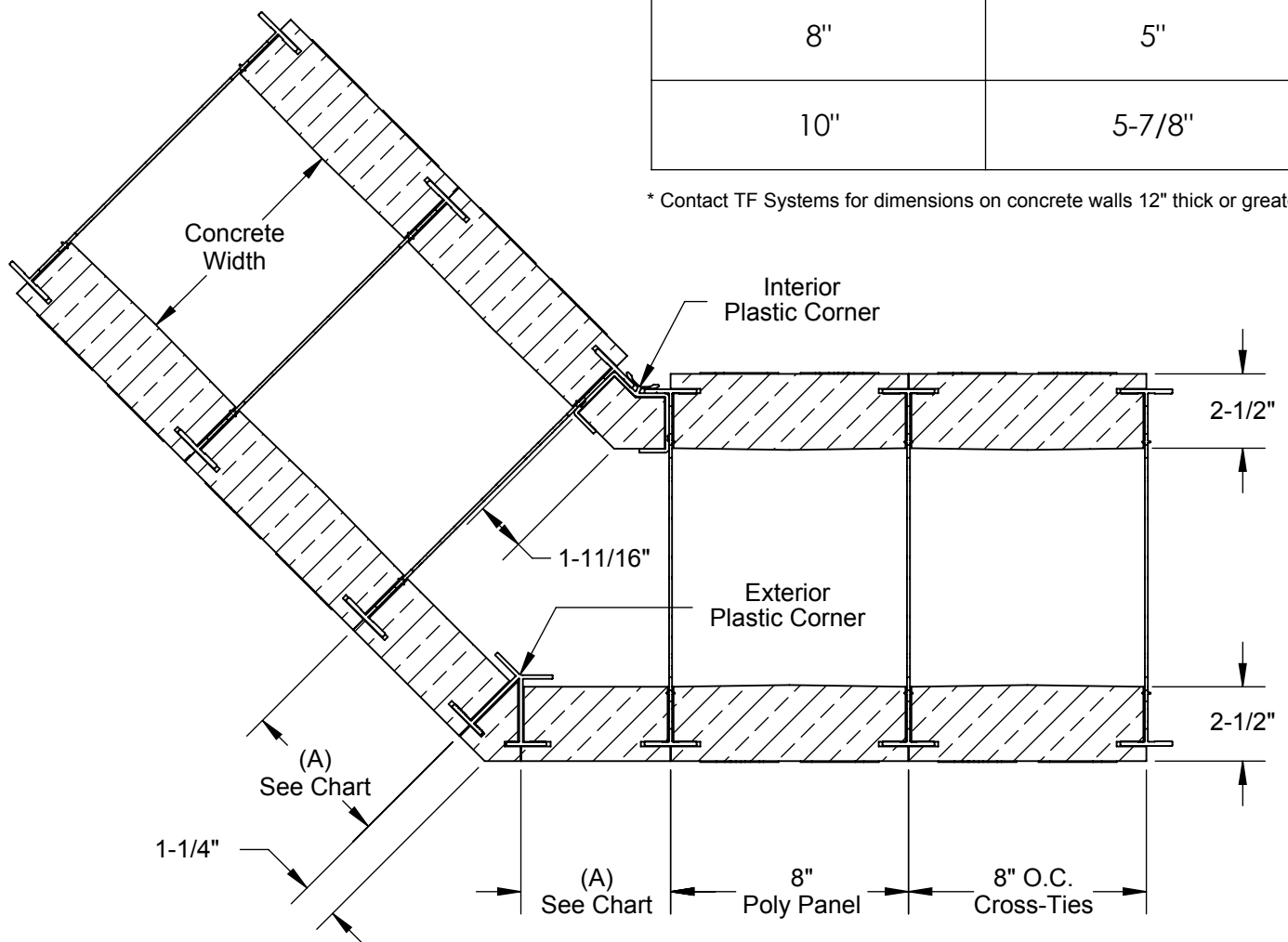
TF Forming Systems, Inc
800-360-4634
www.TFSystem.com

Date: 3/10/2014

Corner Set Dimensions

Concrete Width	(A) Width of Poly Corner Panel
4"	3-3/8"
6"	4-1/4"
8"	5"
10"	5-7/8"

* Contact TF Systems for dimensions on concrete walls 12" thick or greater.



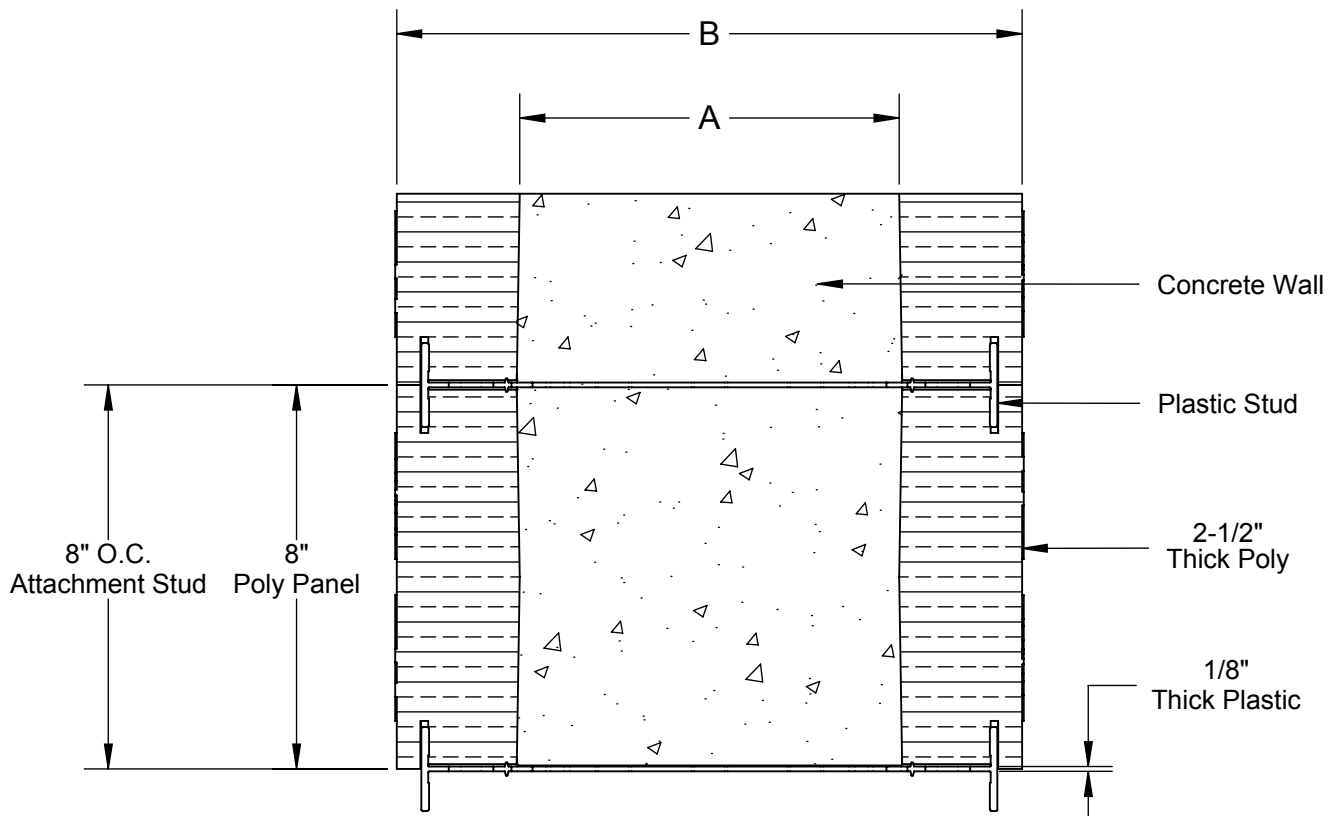
45° Corner Sets

ThermoForm

TF Forming Systems, Inc
800-360-4634
www.TFSystem.com

Date: 3/10/2014

Wall Width Dimensions Top View



System call out	(A) Actual width of concrete	(B) Outside to outside of rigid insulation
4"	4"	9"
6"	6"	11"
8"	8"	13"
10"	10"	15"