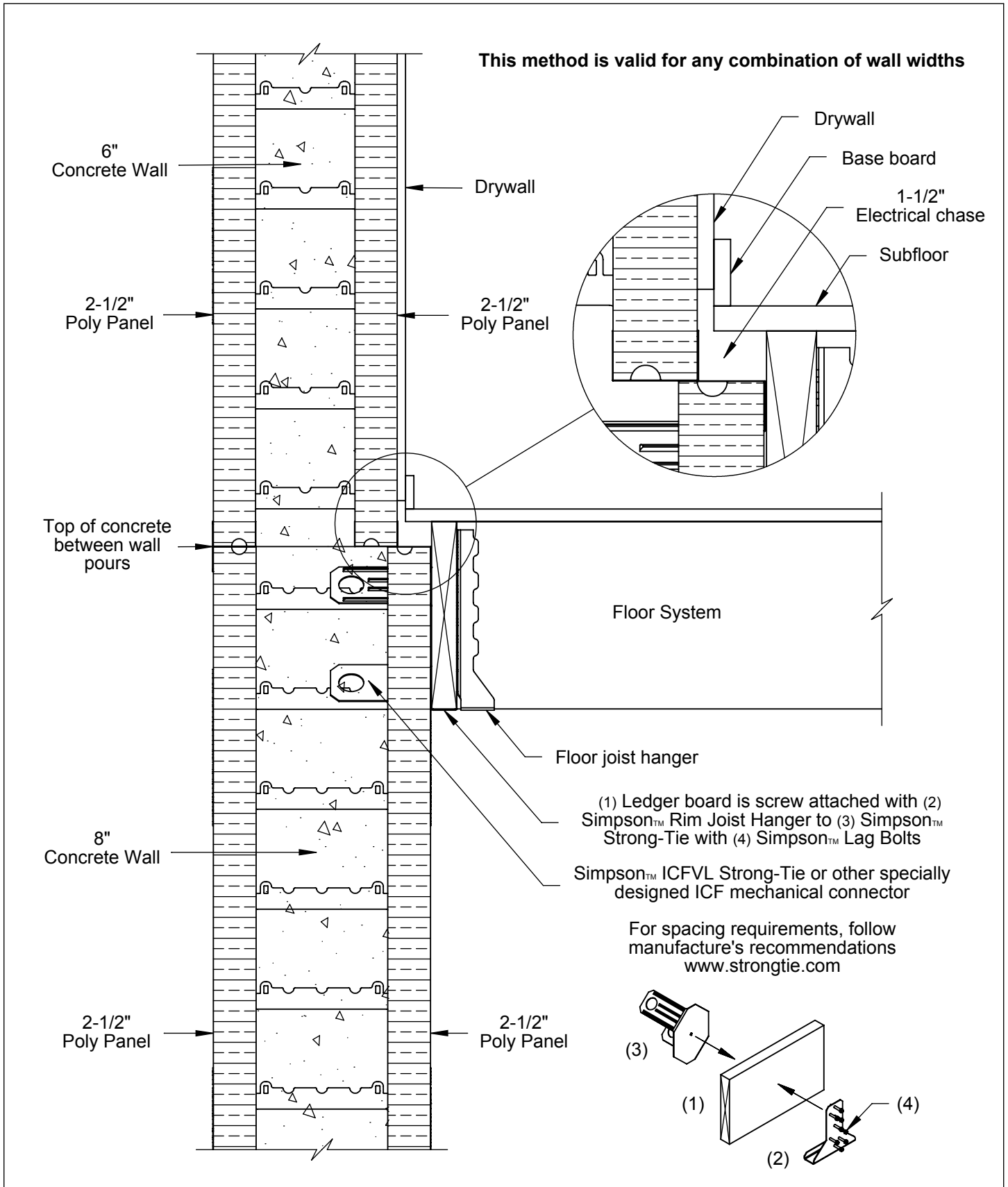


## **Section 9**

# **Floor Connection Details**



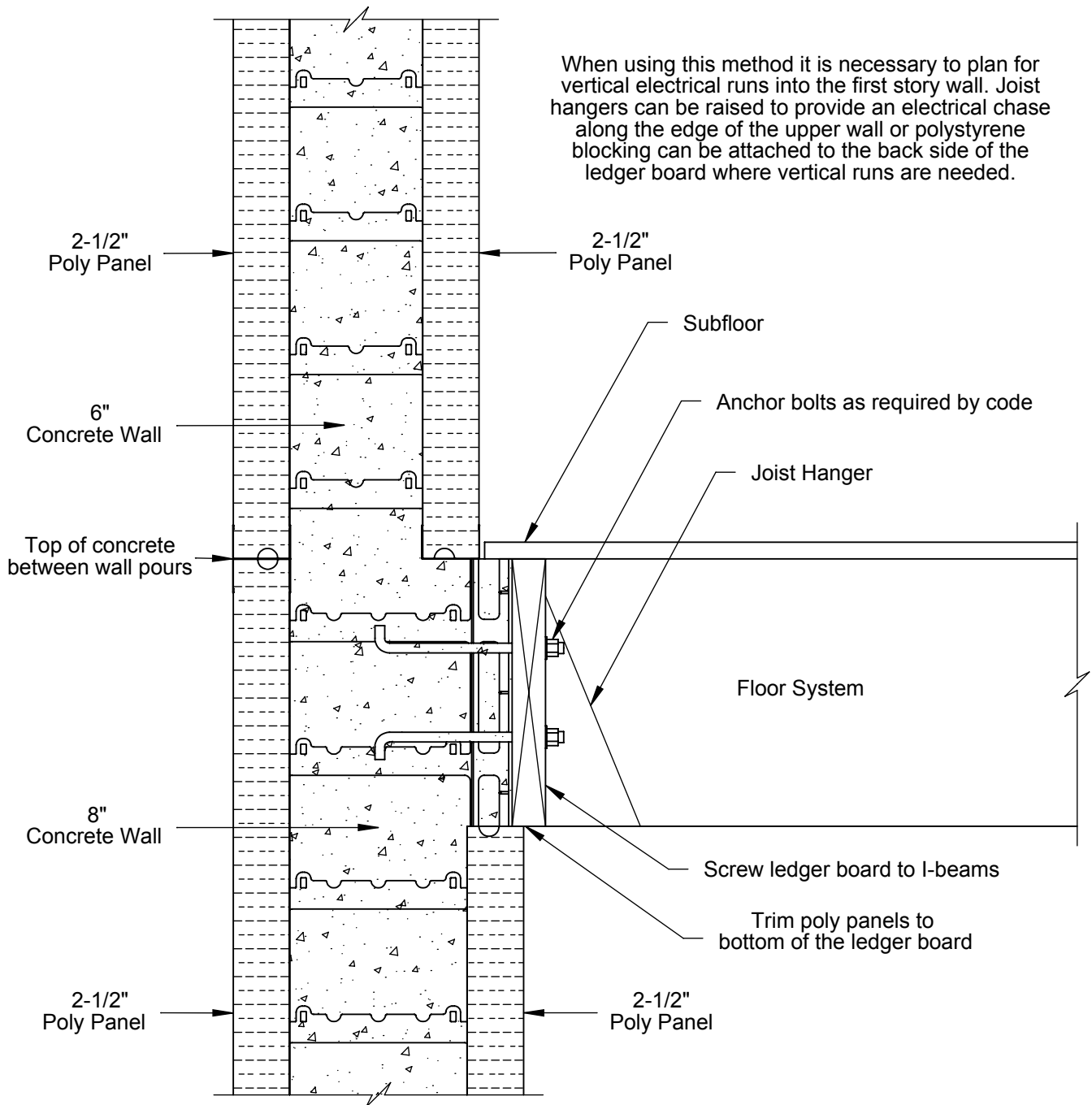
**Ledger Board Detail**  
(with different wall widths)

Using Simpson™ ICF Connectors

TF Forming Systems, Inc.  
800-360-4634  
www.TFSystem.com

Date: 4/14/2014

**This method is valid for any combination of wall widths**



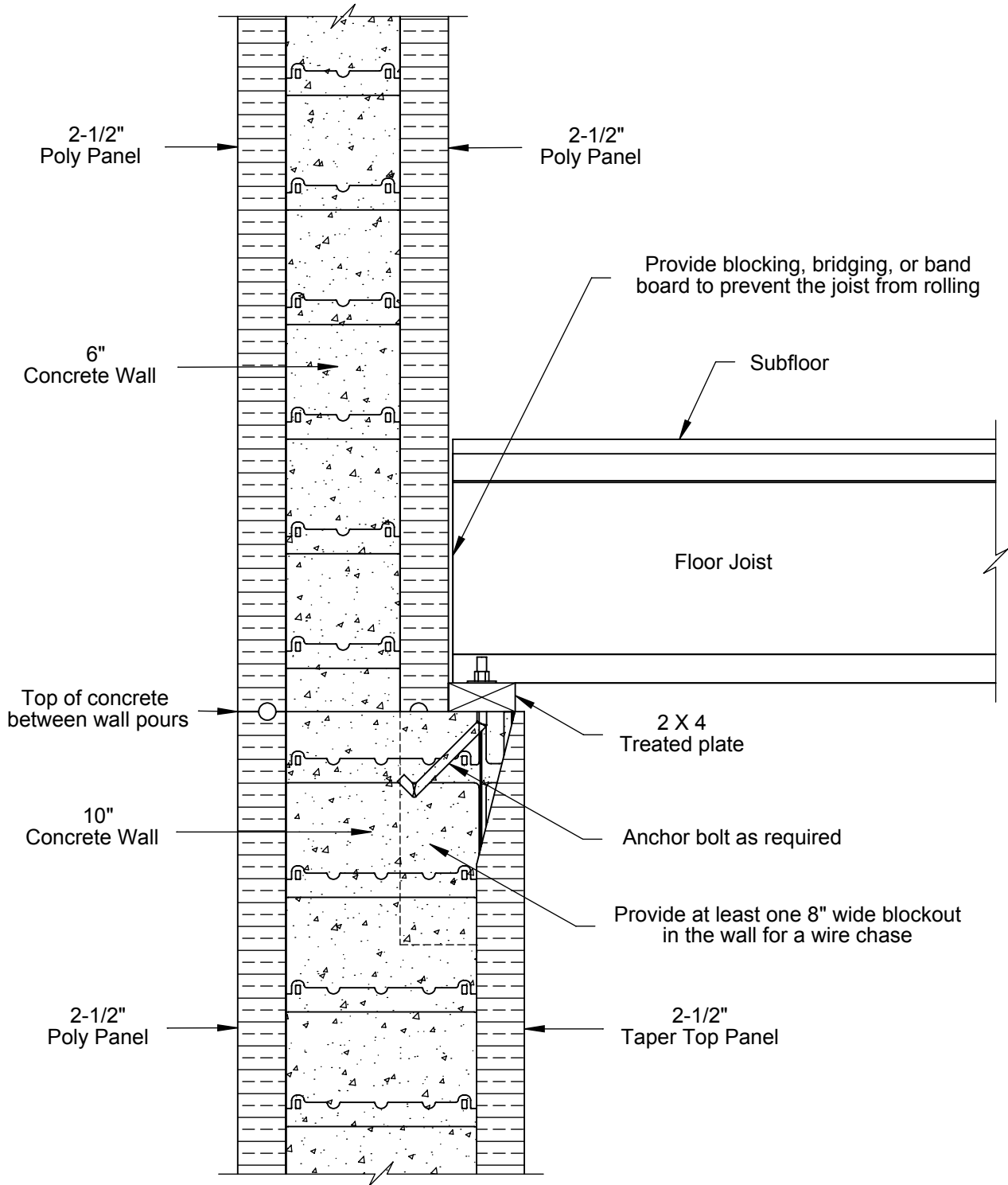
## Ledger Board Detail

TF Forming Systems, Inc.  
800-360-4634  
www.TFSystem.com

Any Combination of Wall Widths

Date: 8/24/2014

This method is valid any time there is a 4" difference in wall widths between floors



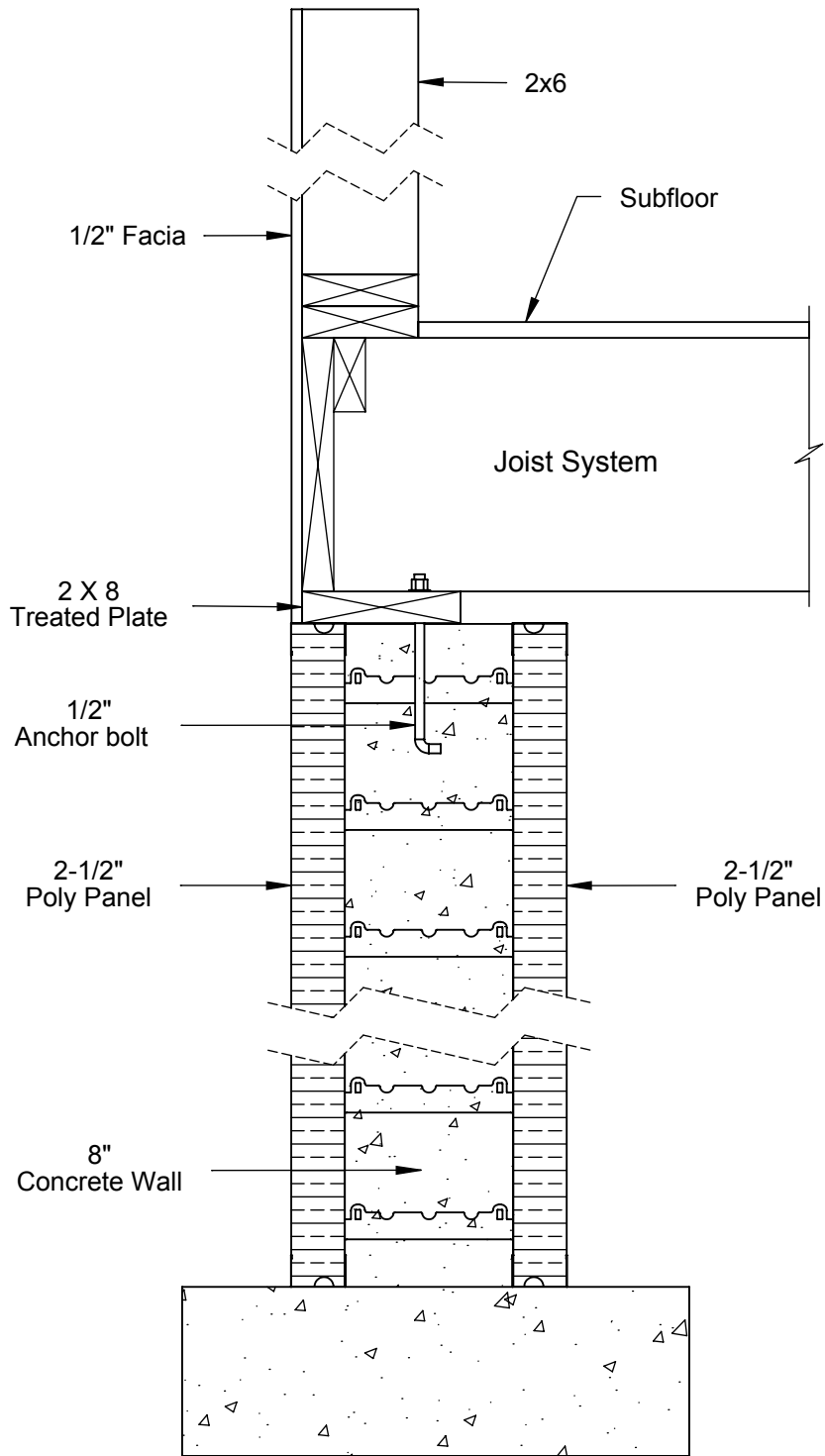
### Bearing Ledge Detail

TF Forming Systems, Inc.  
800-360-4634  
www.TFSystem.com

10" to 6"  
ThermoFormWall

Date: 4/16/2014





**This method can be used with any ThermoForm wall width**



### Stick Wall Detail

TF Forming Systems, Inc.  
800-360-4634  
www.TFSystem.com

Stick Wall on 8" ThermoForm Wall

Date: 6/24/2014